

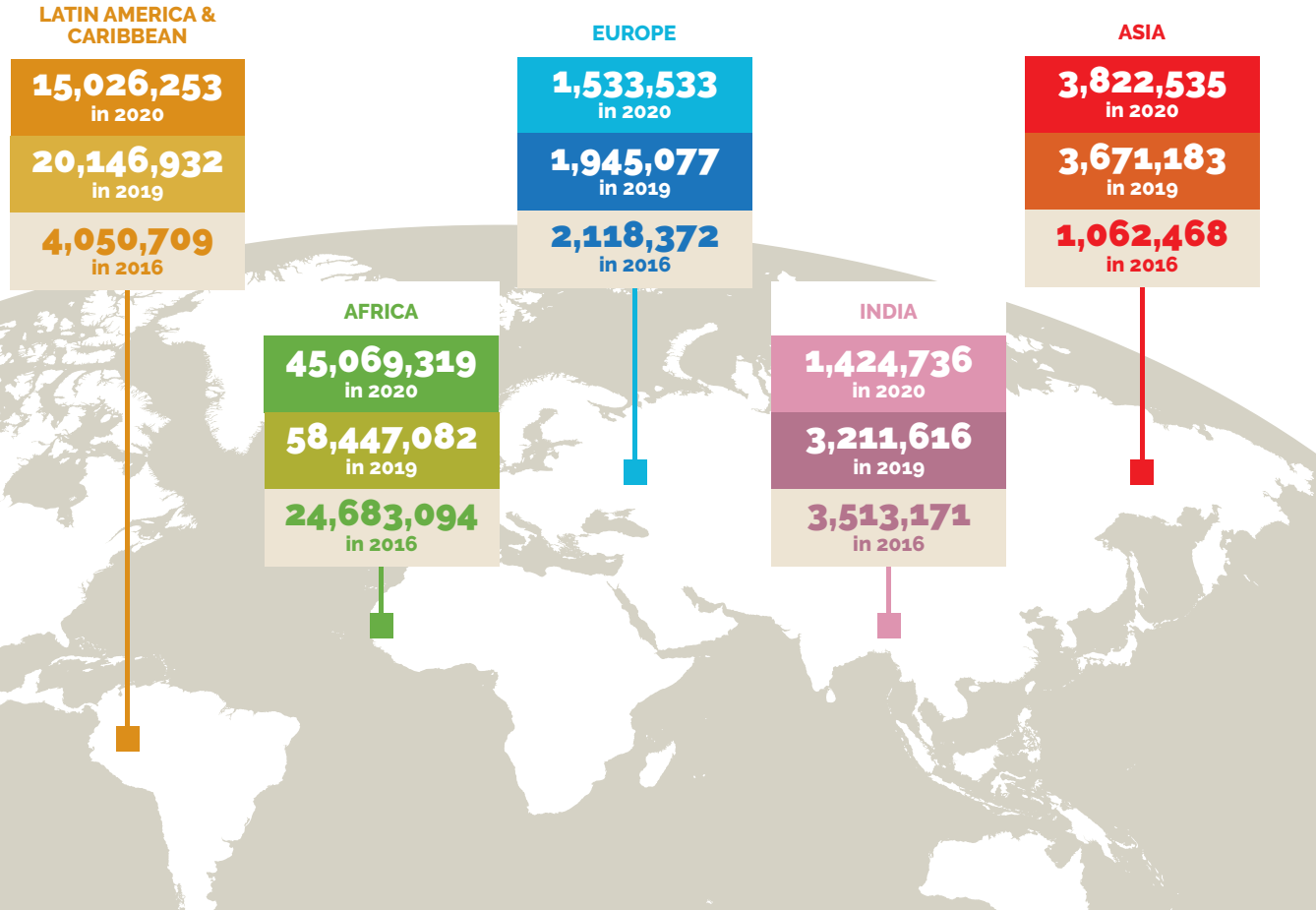


GLOBAL QUALITY REPORT 2020

AHF

AHF Prevention Program

Growth of condom distribution by Bureau (2016-2020)



The year 2020 saw a significant drop in condom distribution across the Bureaus, except for Asia

The performance varies by setting, associated with constraints such as supply issues, import thresholds and COVID-19 restrictions

AHF Prevention Program

Growth of global condom distribution (2016-2020)

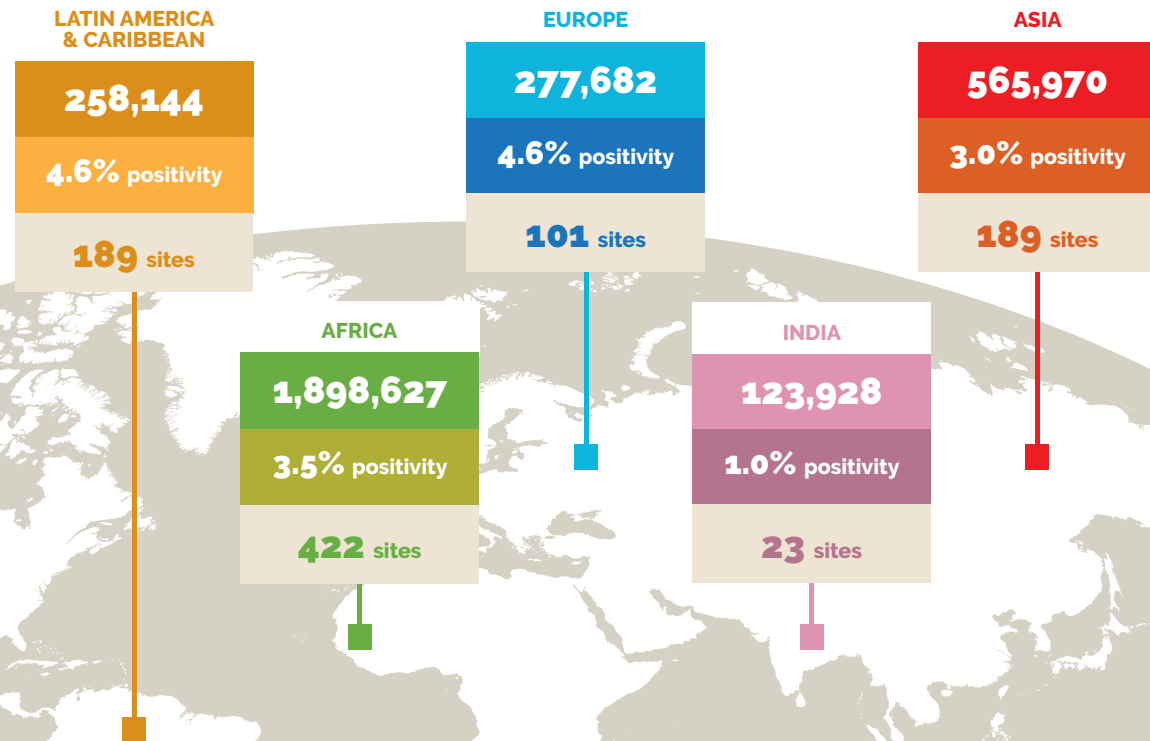


Current online reporting has seen timely submission of inventory reports and close monitoring of consumption by countries

On average globally, 89% of the year's target was reached

AHF Prevention Program

Testing by Regional Bureaus (2020)

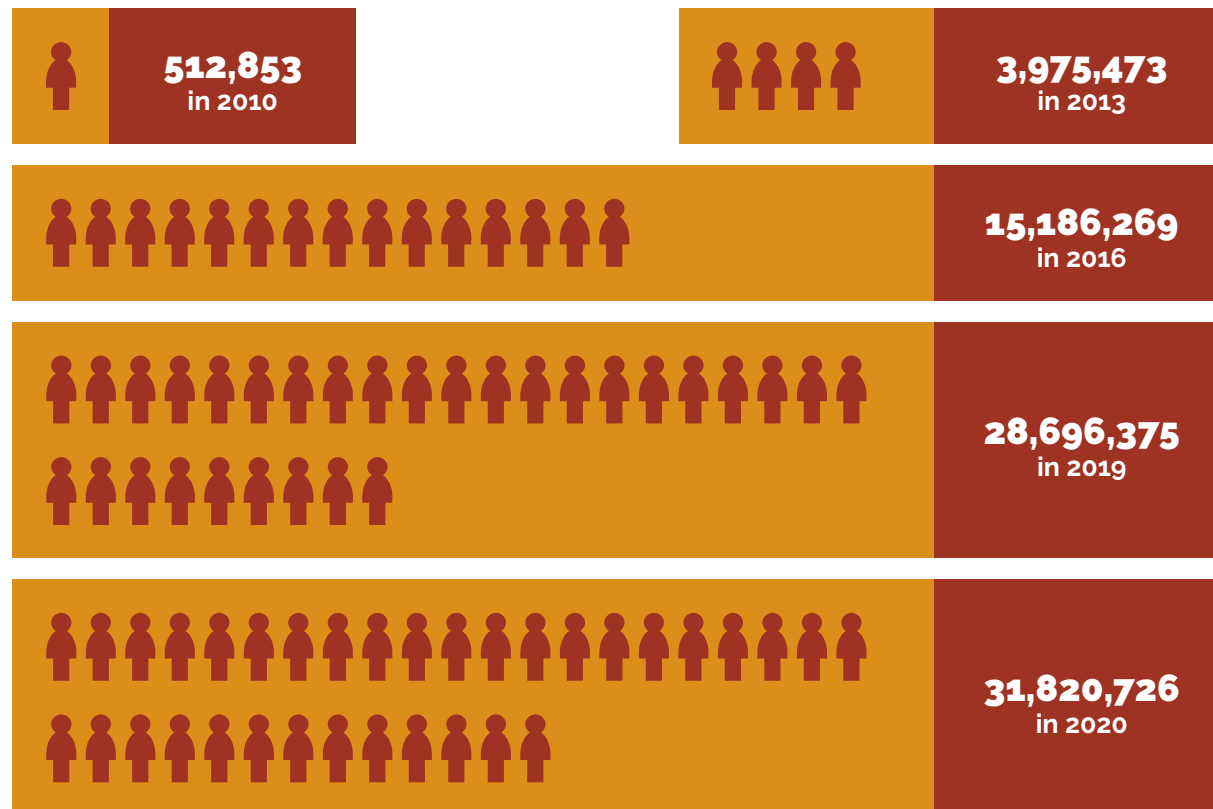


In 2020 alone, over 3 million HIV tests were performed

Variety is related to the total number of test programs and facilities supported in each of the Regional Bureaus

HIV Testing 2010-2020 Cumulative

More than 31 million tests conducted by end of 2020

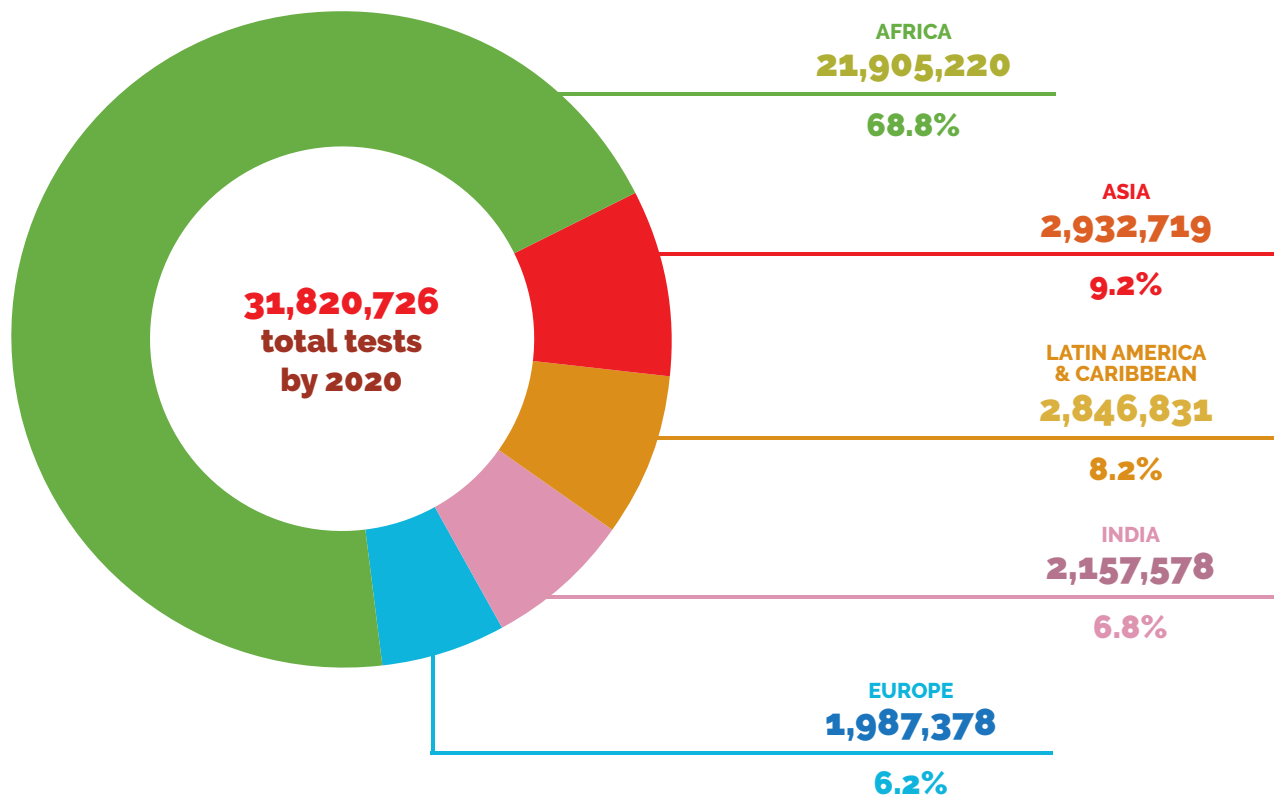


This growth is the result of partnership with Governments, NGOs, Civil Society Organizations (CSOs) and Community Based Organizations (CBOs) in 43 countries

The 5 AHF Regional Bureaus - Africa, Asia, Europe, Latin America & Caribbean and India - play an active role in implementing AHF's prevention program and sustaining its quality

HIV Testing 2010-2020 Cumulative

Contribution by Regional Bureaus

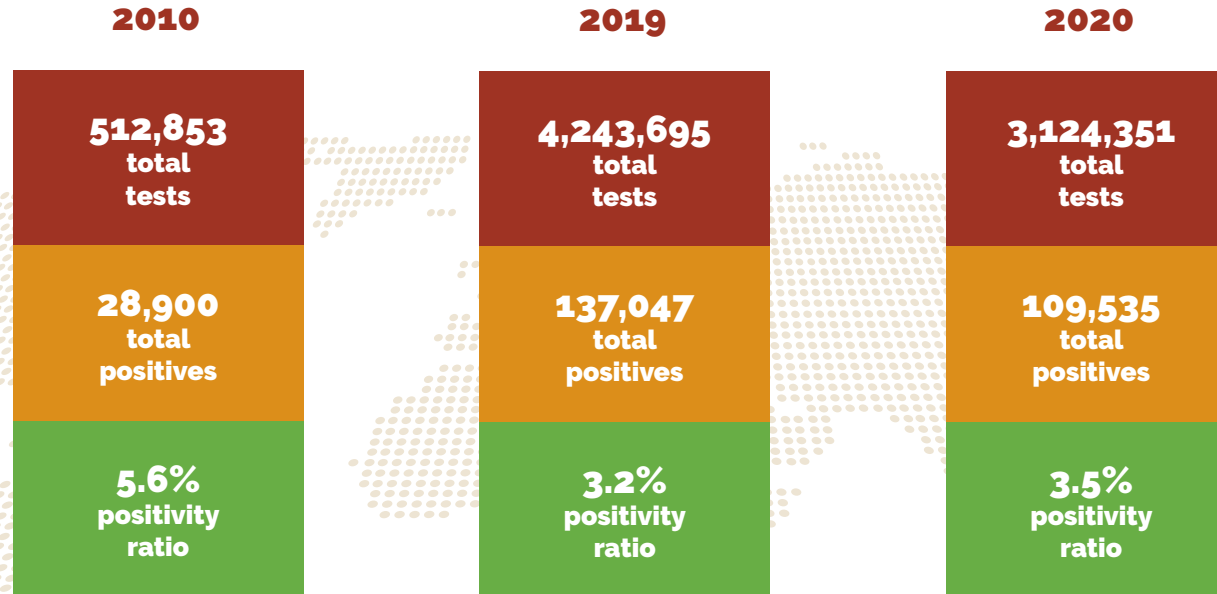


The Africa Bureau accounts for the lion share in numbers of clients tested over the years

In 2020, the numbers are a direct result of the Bureau overseeing 422 Testing Programs

HIV Testing

Trend comparison (2010-2020)

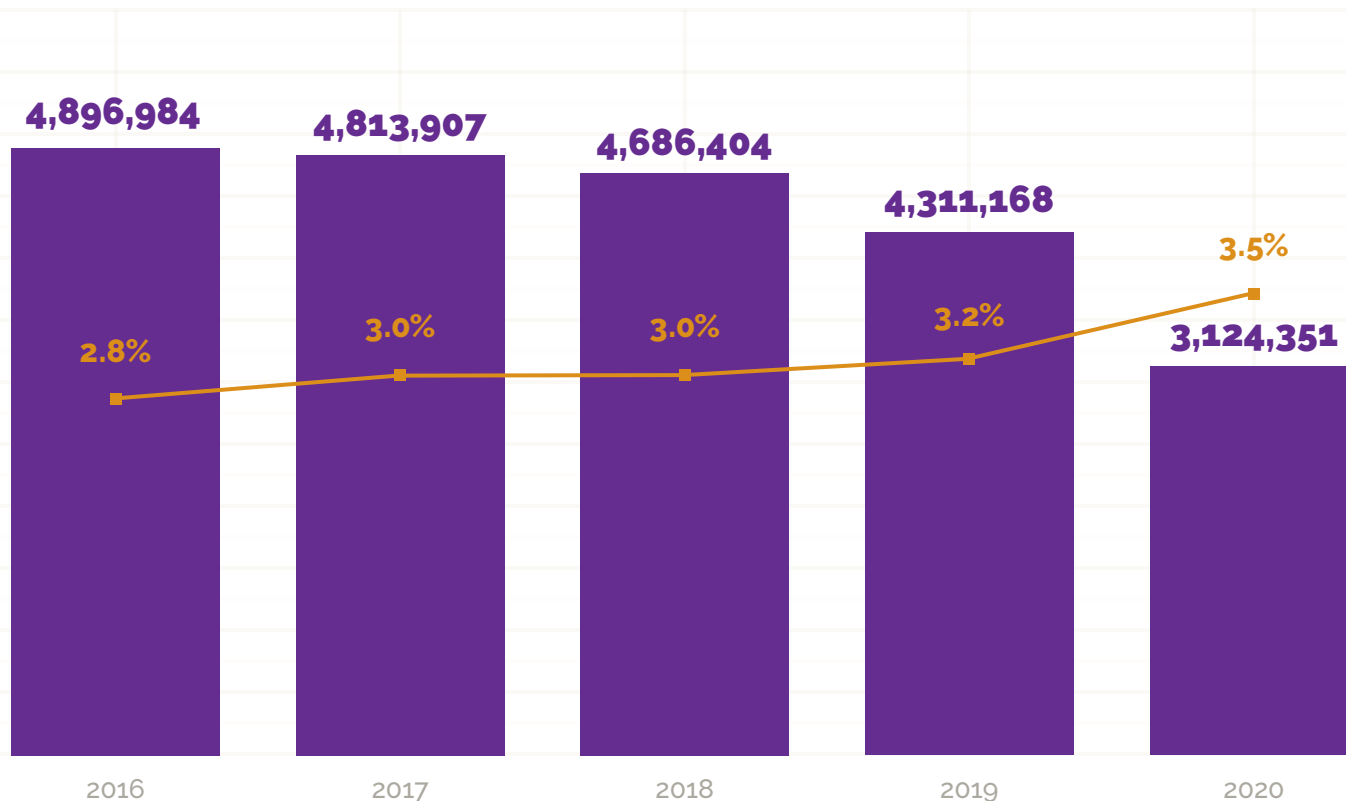


The HIV Testing program continued to grow over the years, testing over 4 million clients in 2019 as compared to 2010 with half a million

2020 though saw a decrease of over a million, associated with the impact of the COVID-19 pandemic

Global Five-Year Trend

Persons tested and positivity ratio (2016-2020)

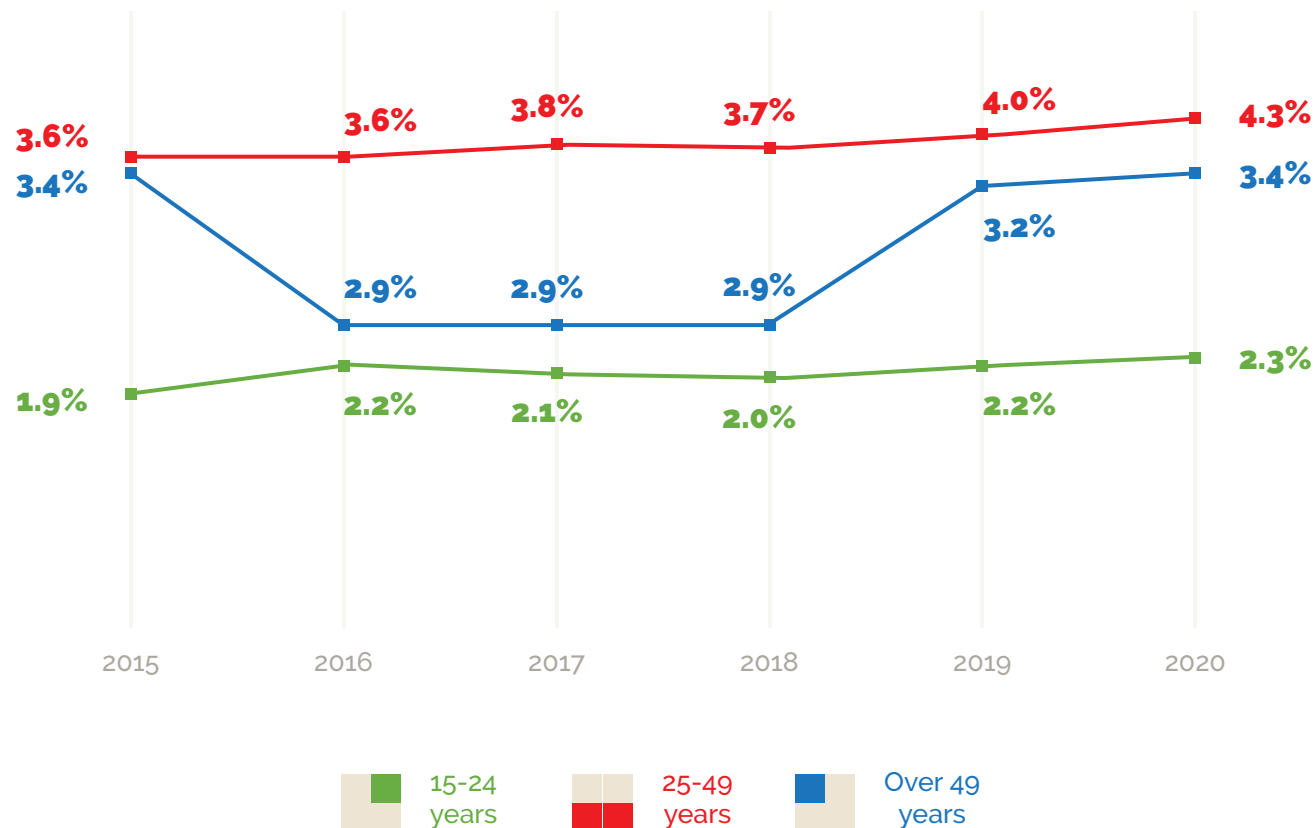


The total numbers tested decreased from 2019 to 2020 due to COVID-19 restrictions affecting testing programs

The increased positivity in 2020 may result from targeting Key Populations, or caused by the fact that under these restrictions more exposed or symptomatic individuals pursued the test

HIV Testing

Six-year positivity trend by age group

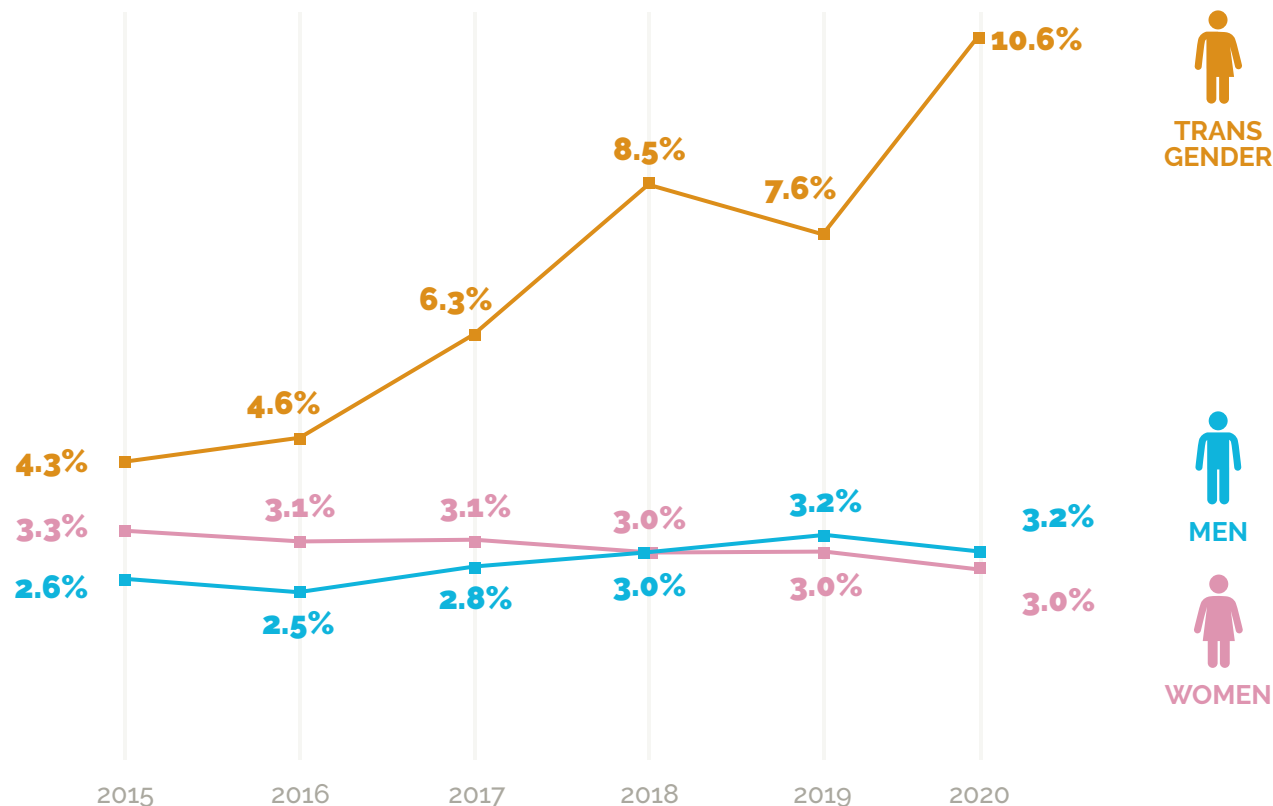


The overall positive yield for the age group 49 years and older increased from 2.9% to 3.4% overall

Yields in the other age groups did not change significantly over the six years

HIV Positivity

Positivity rate by gender 2015-2020

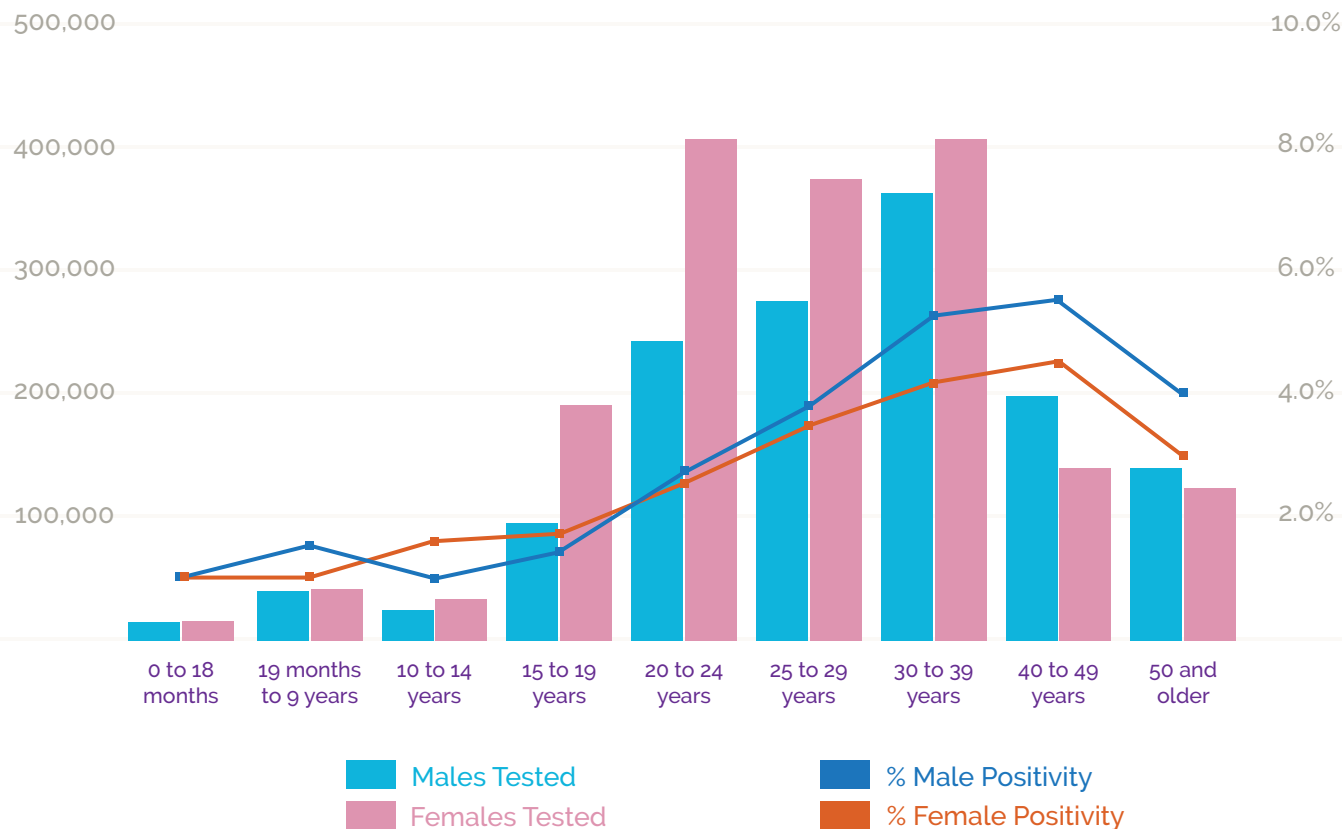


Until 2018 positivity is slightly higher among females than among men whereas in 2019 and 2020 the trend is reversed

Transgender clients in India and the Latin America & Caribbean Bureaus have consistently high positivity, though total numbers tested are low, indicating that this population deserves more attention

HIV Testing

Positivity yield in 2020



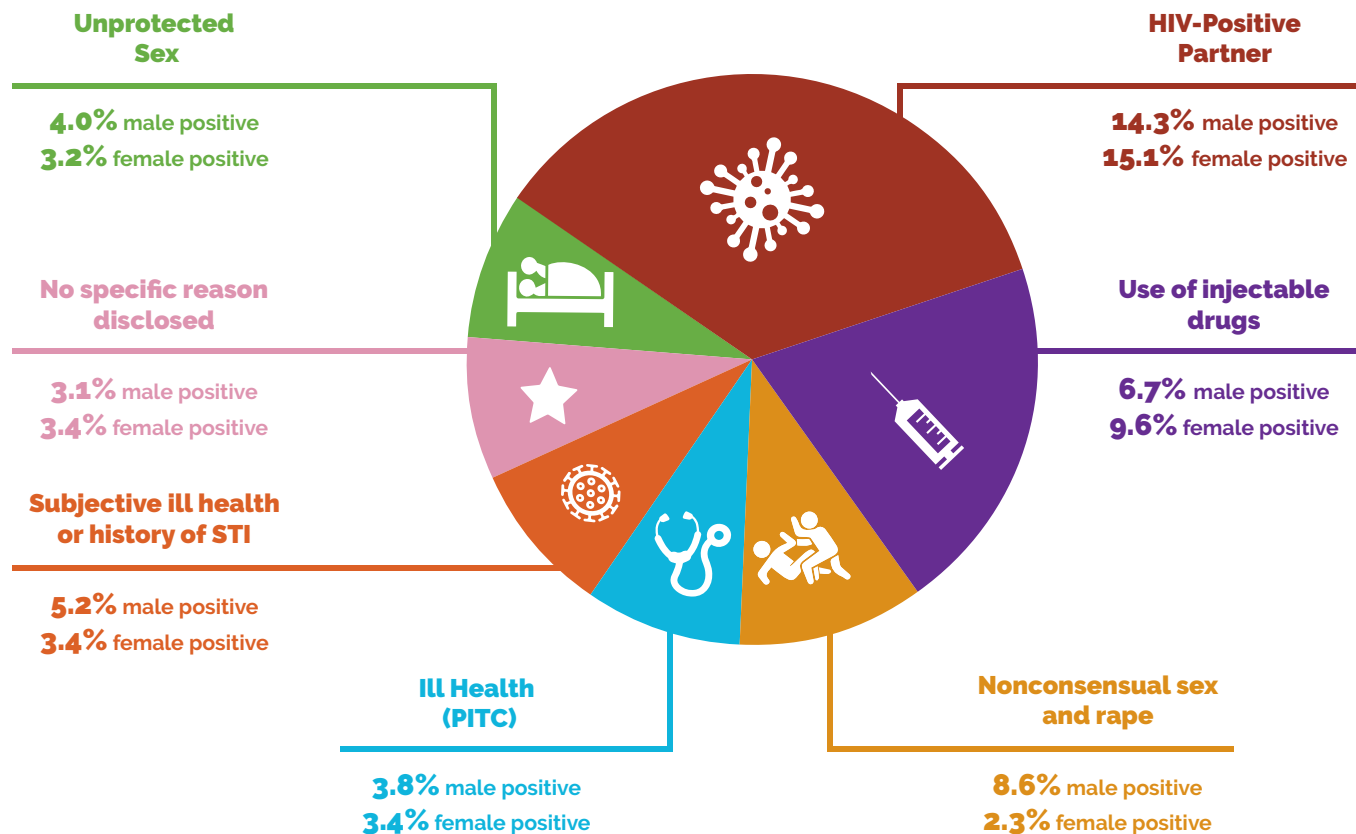
Highest positivity rates globally are within the 30-49 years age category, with positivity higher among males

Females 15 to 24 old are almost twice as often tested than males, which may reflect Africa's focus on testing adolescent girls and young women

Positivity in this age group though is being almost equal for both sexes

HIV Positivity

Reason of being tested in 2020

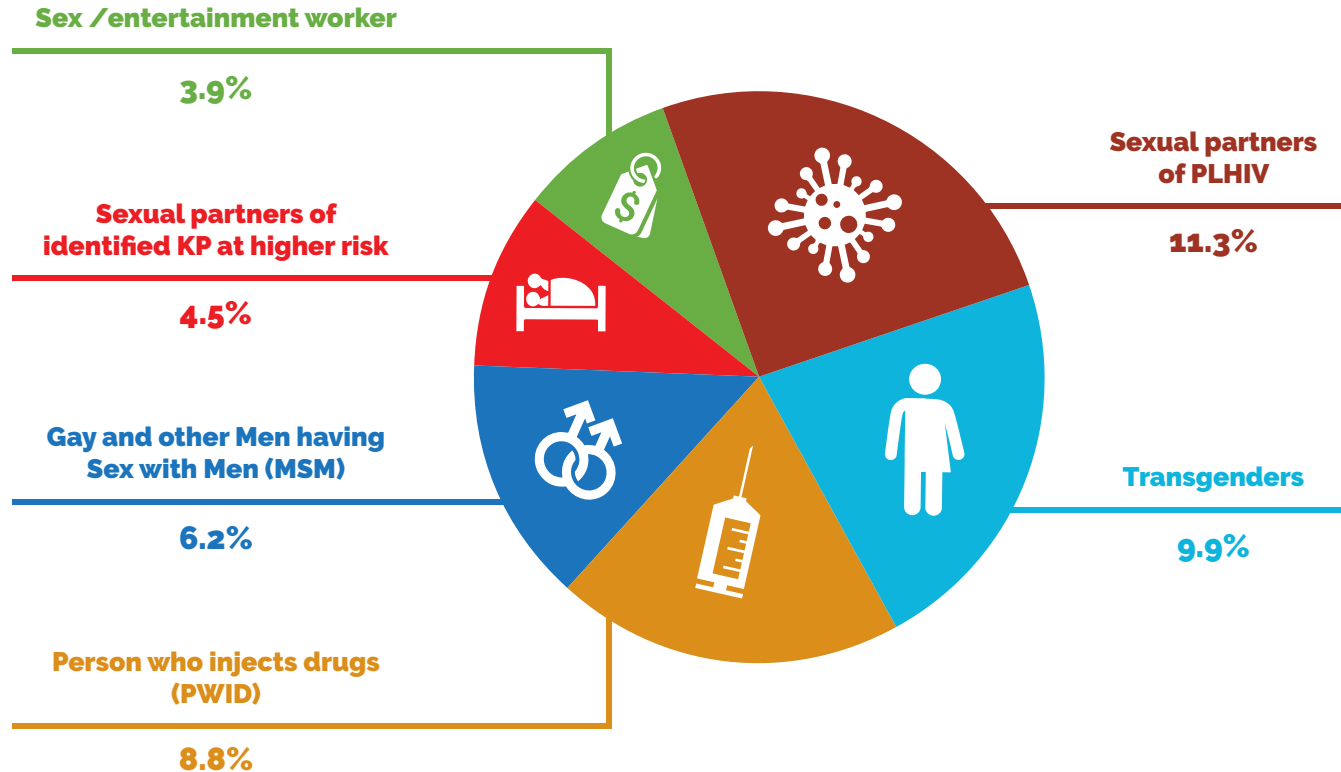


In 2020 the “reason for being tested” has been recorded more accurately as to guide the programmes in which categories or at risk population to target

Partner testing, Injecting drug use, Provider Initiated Testing & Counseling (PITC) and Ill Health or STI history for clients attending health facilities score high in positivity yield

HIV Positivity

Global key and vulnerable populations (2020)

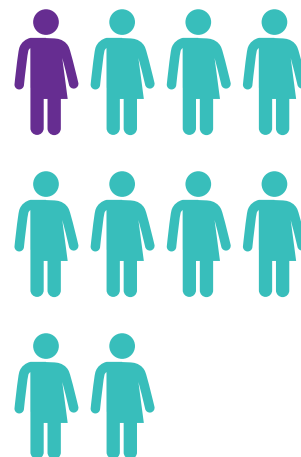
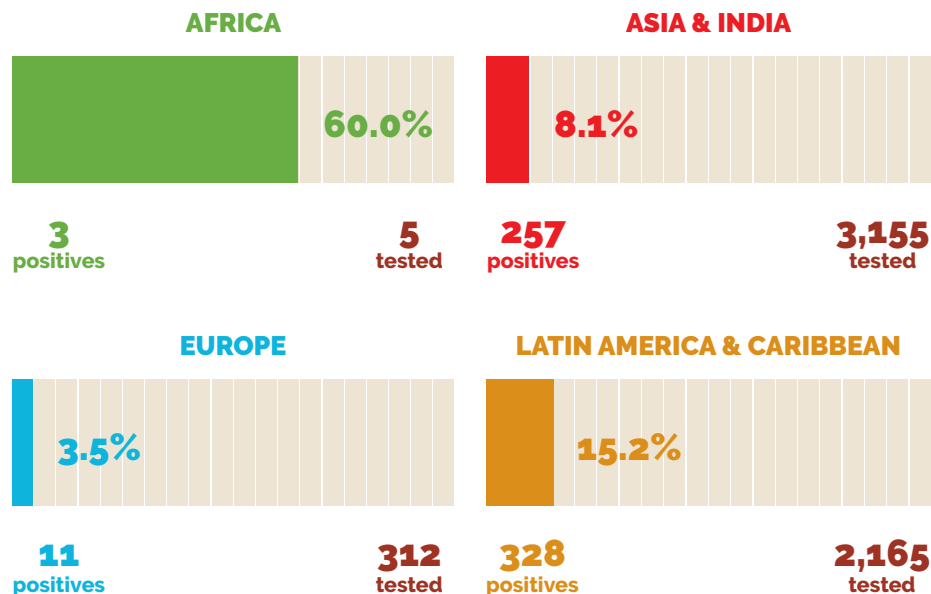


Effectiveness of targeted testing is illustrated and high positivity is observed among sexual partners of PLHIV, followed by transgenders, People Who inject Drugs (PWID) and Men having Sex with Men (MSM)

Innovative strategies are required to reach and MSM, PWID and transgenders as they yield high positivity rates

HIV Testing by Transgender

Number of tests and positivity ratio by Regional Bureaus



5,637 tested

599 positives

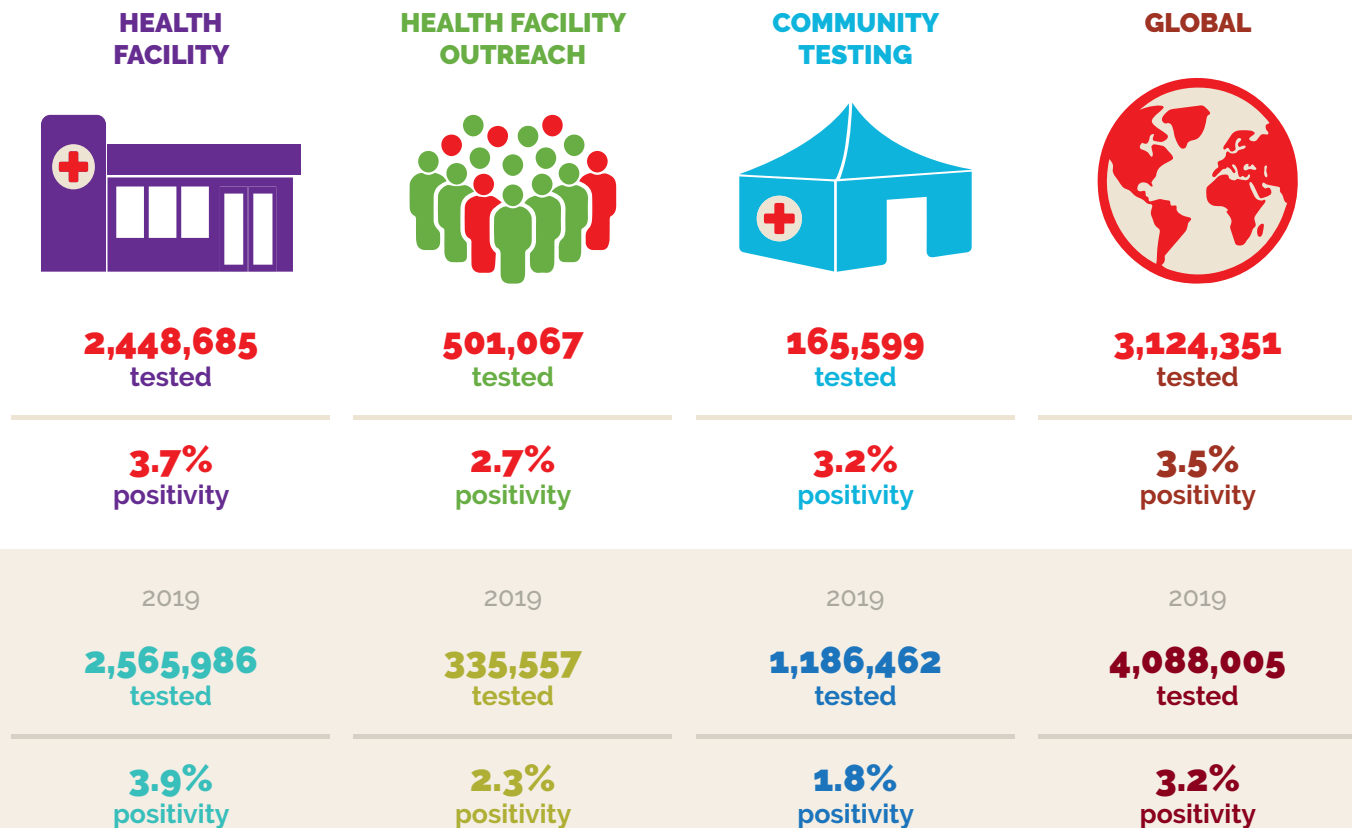
10.6% positivity

Most Transgenders are tested in Asia & India and Latin America & Caribbean Bureaus

Positivity yield is reported at over 8% and 15% respectively

HIV Testing and Positivity

Numbers tested and positivity ratio by setting (2020)



By HIV-test setting, most were carried out at a health facility with higher yields (3.7%)

Community testing decreased in 2020 due to pandemic restrictions, though facility testing numbers remained almost equal

HIV Positivity

Testing by program in 2020

AHF Managed Stand-alone RTP Programme

64,919 tested
1,163 positives

2019

202,518 tested
1.6% positivity

AHF Partner

511,764 tested
15,227 positives

2019

1,003,400 tested
2.0% positivity

AHF Managed Health Facility

252,414 tested
11,709 positives

2019

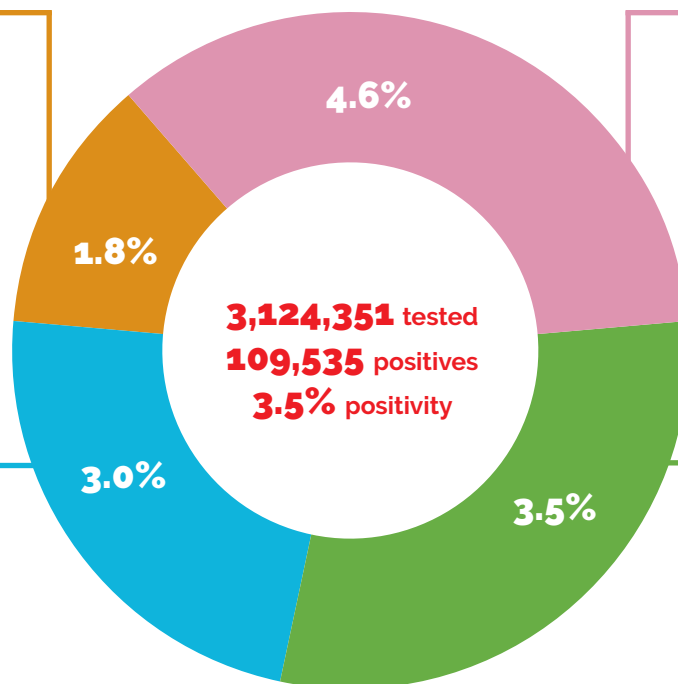
398,016 tested
4.3% positivity

AHF Supported Health Facility

2,295,254 tested
81,436 positives

2019

2,481,246 tested
3.6% positivity

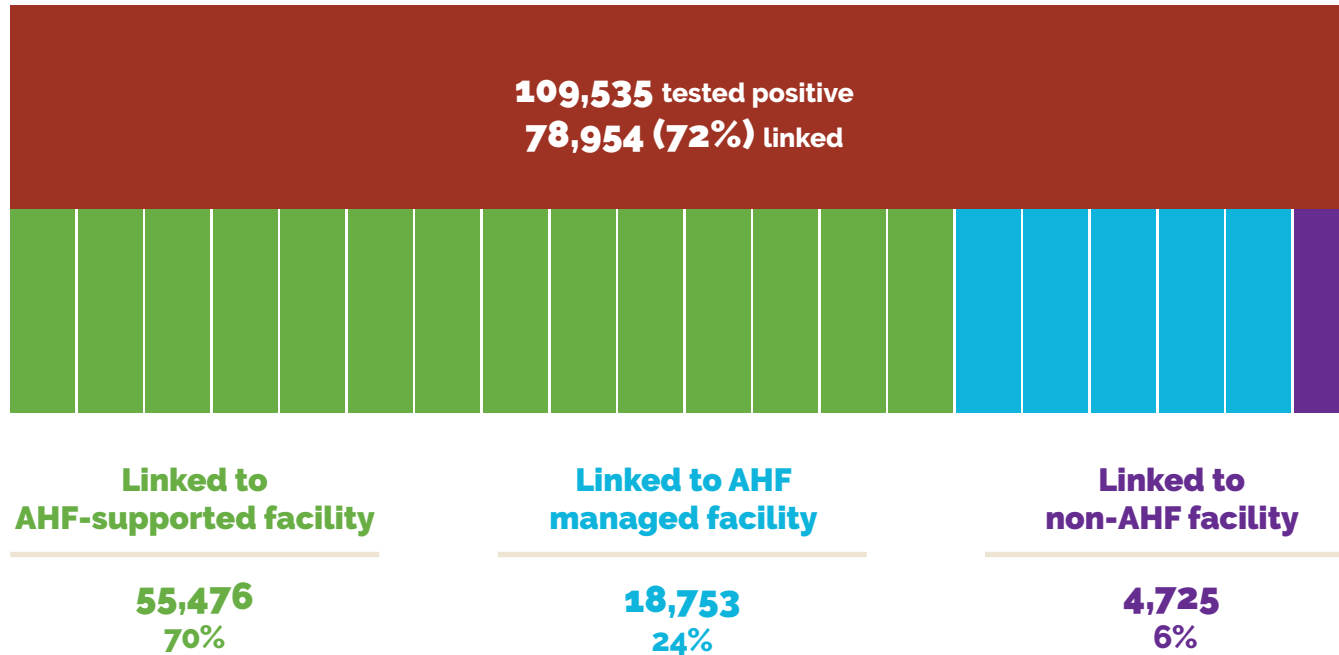


Compared with 2019, strongest decrease in number of clients tested is observed for AHF stand-alone Rapid Test Programmes (RTP), followed by AHF contracted (NGO) partner programmes

Positivity in 2020 is highest in AHF-managed facilities (4.6%), followed by AHF-supported facilities (3.5%) and Partner Programs (3%)

Linkage into Care and Treatment

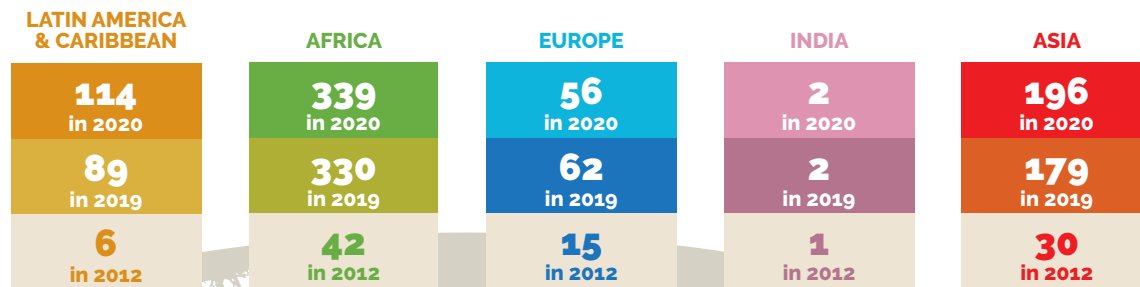
"Confirmed Linkage" (2020)



"Confirmed linkage" applies to an HIV-positive client who has attended a facility two consecutive times and is enrolled into care through a HIV-care facility registration or ID number

HIV Care and Treatment

Increase of facilities by Regional Bureau (2012-2020)



AHF-managed and supported HIV care & treatment facilities have grown exponentially over the years, from 94 in 2012 to 697 by the end of 2020

The absolute growth of clients in care is associated with new countries and respective facilities joining AHF Programs in 2020.

The total reporting facilities are 707 (including 10 wellness clinics; accounting for closure of 51; and an addition of 87 new facilities in 2020)

Clients Initiated on ART

Census excludes wellness centres in Latin America

2020



1,290,654
98.0% on ART

2019



1,190,998
97.4% on ART

2015



517,689
85.8% on ART

**LATIN AMERICA
& CARIBBEAN**

187,615
on ART

98%
ART Coverage

AFRICA

687,366
on ART

99%
ART Coverage

EUROPE

99,994
on ART

89%
ART Coverage

INDIA

2,610
on ART

99%
ART Coverage

ASIA

313,069
on ART

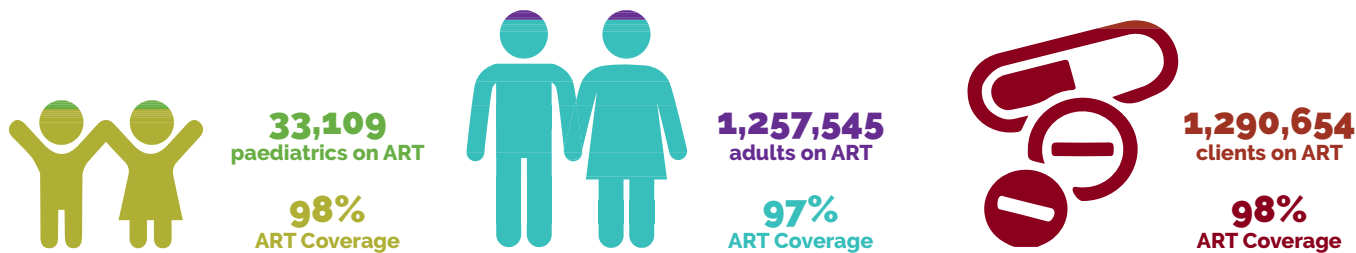
97%
ART Coverage

Proportion of all enrolled clients who initiated ART has improved

Early ART initiation for newly identified positives and an increase in the number of AHF supported facilities globally have boosted ART coverage

HIV Care and Treatment: Global Program

Over 1.3 million lives in HIV care (2020)



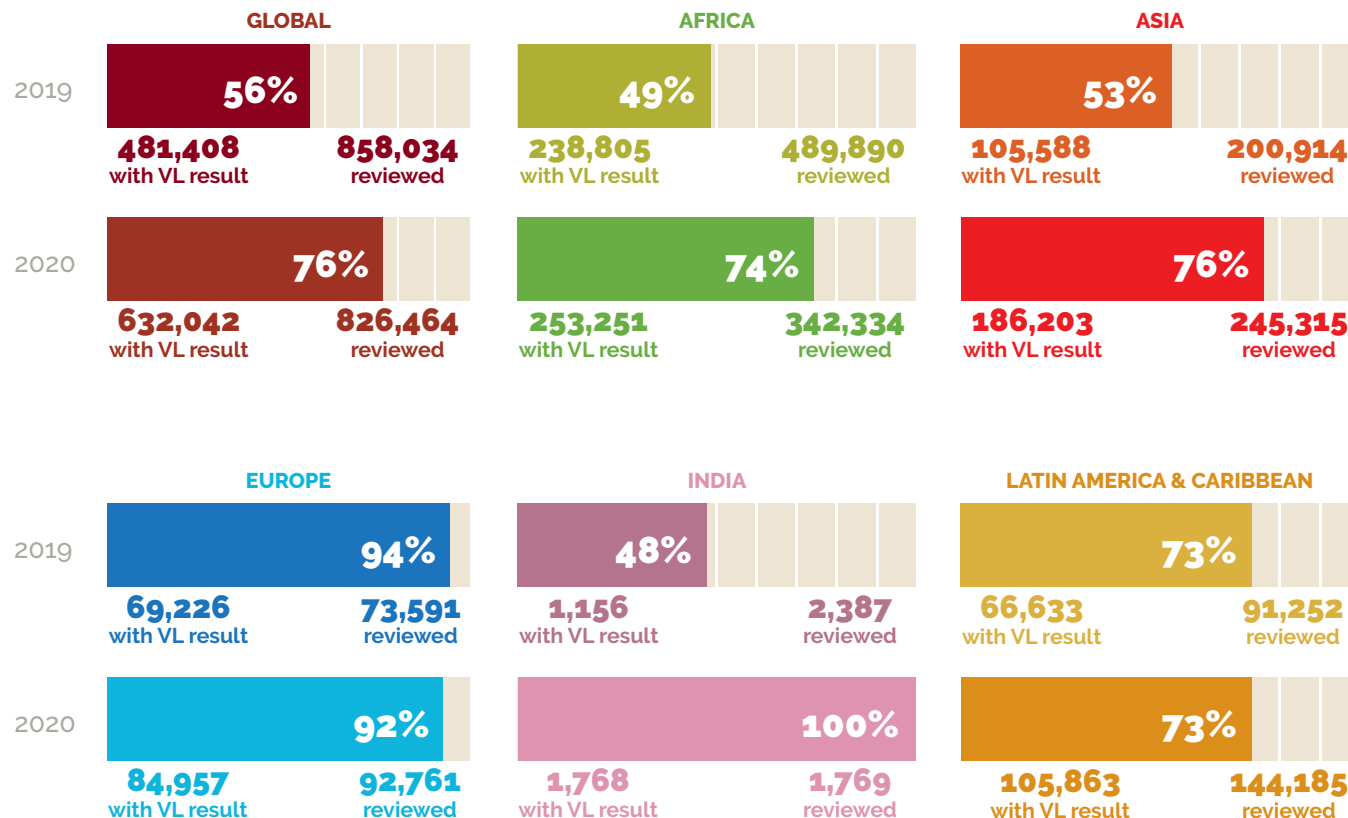
Combining Global and US domestic programs, AHF has reached the milestone of "1.5 million lives in care" by the end of 2020

By the end of 2020 the total stood at 1,323,511 (this number excludes US census - 88,629 and Wellness centers - 93,370)

Uptake of the 'Treatment for All' strategy in all countries has seen increased ART coverage in the past 5 years

Treatment Monitoring

Viral Load Coverage (2019 versus 2020)

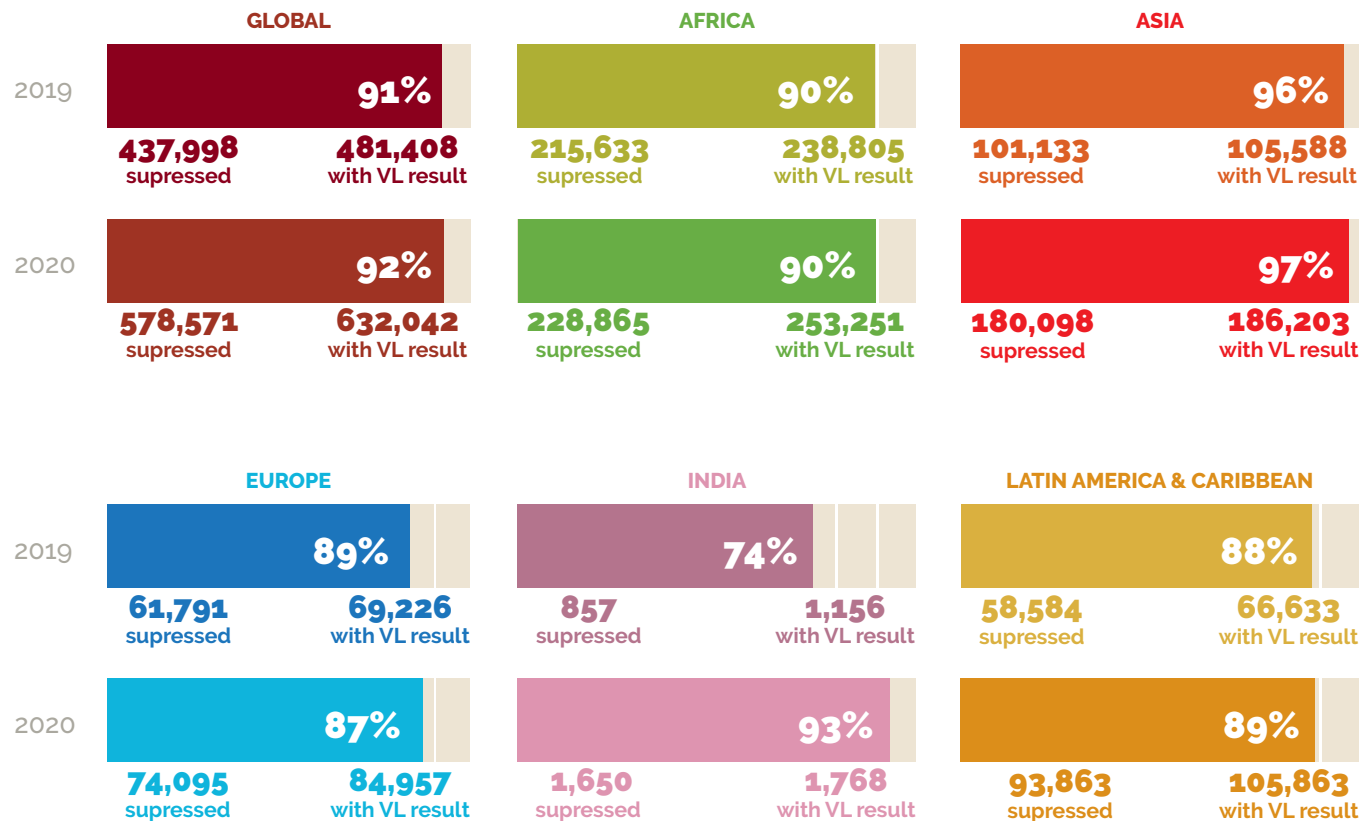


The VL Coverage data tells us that in 2020 as compared with 2019, access to VL testing (VL test coverage, measured as the proportion of clients with a test result out of all clients reviewed) has increased greatly in Africa, Asia and India - 74, 76 and 100% respectively

Coverage remained stable in Latin America (73%) and is slightly down, but still highest in Europe (92%)

Viral Load Suppression

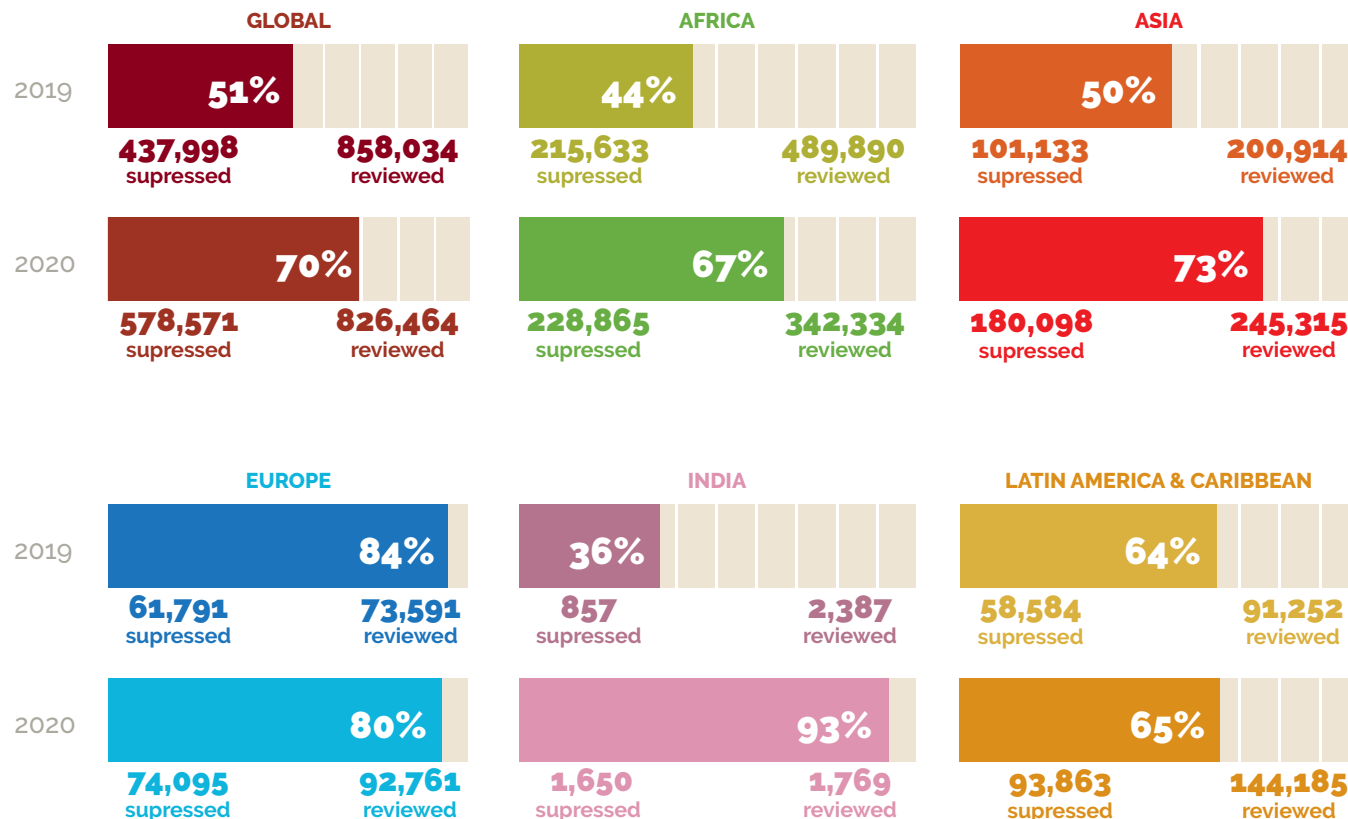
Among clients with VL test result (2019 versus 2020)



VL suppression (VL<1,000 copies/mL) among the total number of clients with a VL test result remained stable across the five Bureaus

Viral Load Suppression

Among all clients in care (2019 versus 2020)

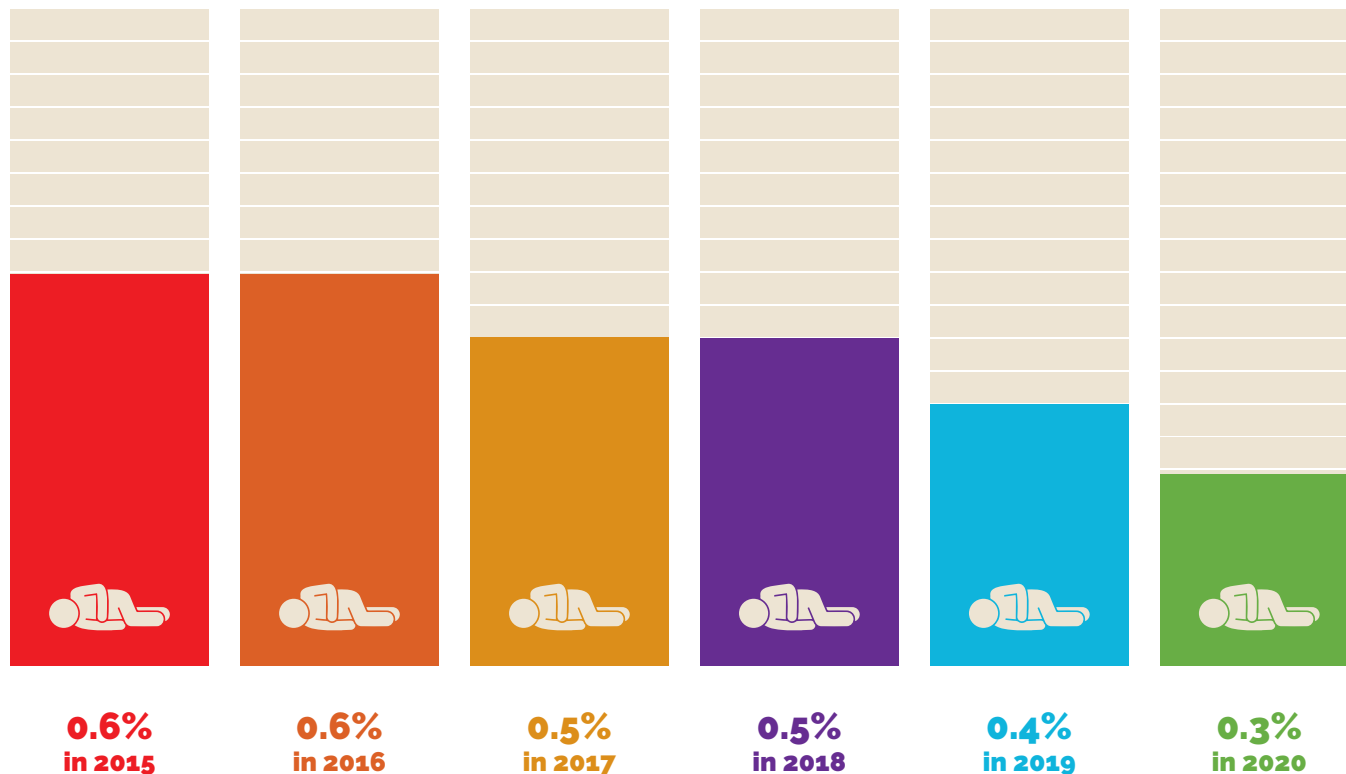


VL suppression among all clients on ART regardless of whether they had a viral load test, improved substantially for Africa, Asia and India comparing 2019 with 2020

Globally, the VL suppression among all clients on ART is 51% in 2019 and 70% in 2020

HIV-Related Mortality

Trend in proportion of the annual census (2015-2020)



HIV-related mortality as proportion of total census each year has halved, from 0.6% in 2015 to 0.3% in 2020

This translates in a mortality ratio of 5.8 in 2015 to 3.3 per 1,000 clients in 2020

No-Longer-In-Care Clients (NLIC)

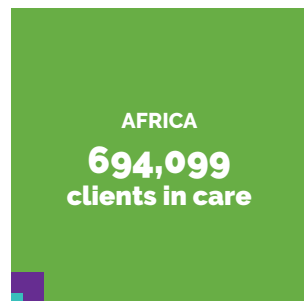
Proportion by Regional Bureau (2020)



127,845 NLIC 8.8%
42,919 LTFU 3.0%



379 NLIC 12.5%
160 LTFU 5.3%



76,188 NLIC 9.9%
27,088 LTFU 3.5%



4,938 NLIC 4.2%
897 LTFU 0.8%



18,698 NLIC 8.9%
9,320 LTFU 4.4%



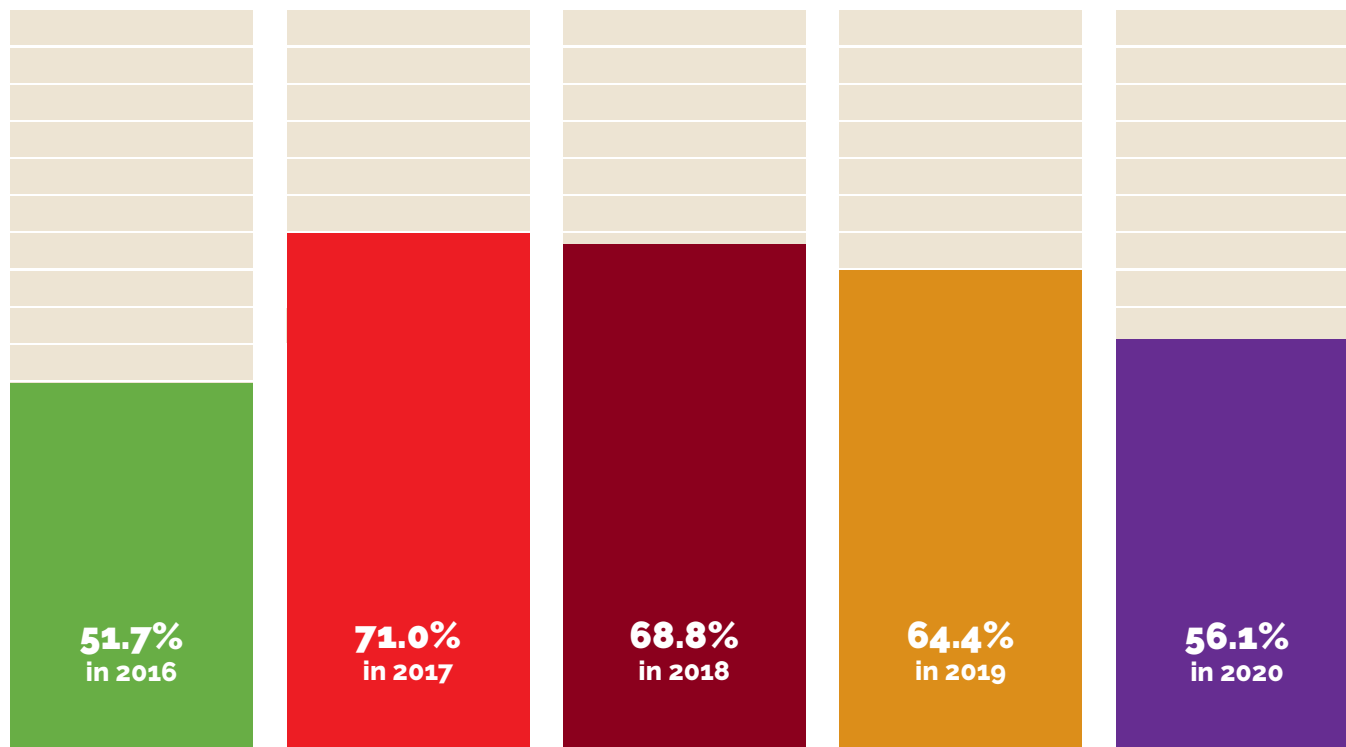
27,670 NLIC 7.9%
5,454 LTFU 1.6%

Clients "No Longer in Care" (NLIC) are the ones who cease attending the reporting facility for HIV care and treatment

Globally, from the total number of clients in care, 127,845 (8.8%) became NLIC and 42,919 (3.0%) of the total clients in care are LTFU

Five-Year Trend

Proportion LTFU among clients reported as NLIC
(2016-2020)



Lost-To-Follow-Up (LTFU) clients as proportion of clients No-Longer-In-Care (NLIC), remains high at 56%

Optimize Retention Initiative (ORI) is aimed at reversing this trend through increased client satisfaction, improved care, better adherence and less discontinuation of treatment

Lost-To-Follow-Up Clients (LTFU)

Proportion among all clients (2019 versus 2020)

AFRICA



5.1%
in 2019

3.5%
in 2020

ASIA



1.3%
in 2019

1.6%
in 2020

EUROPE



1.0%
in 2019

0.8%
in 2020

INDIA



3.7%
in 2019

5.3%
in 2020

LATIN AMERICA & CARIBBEAN



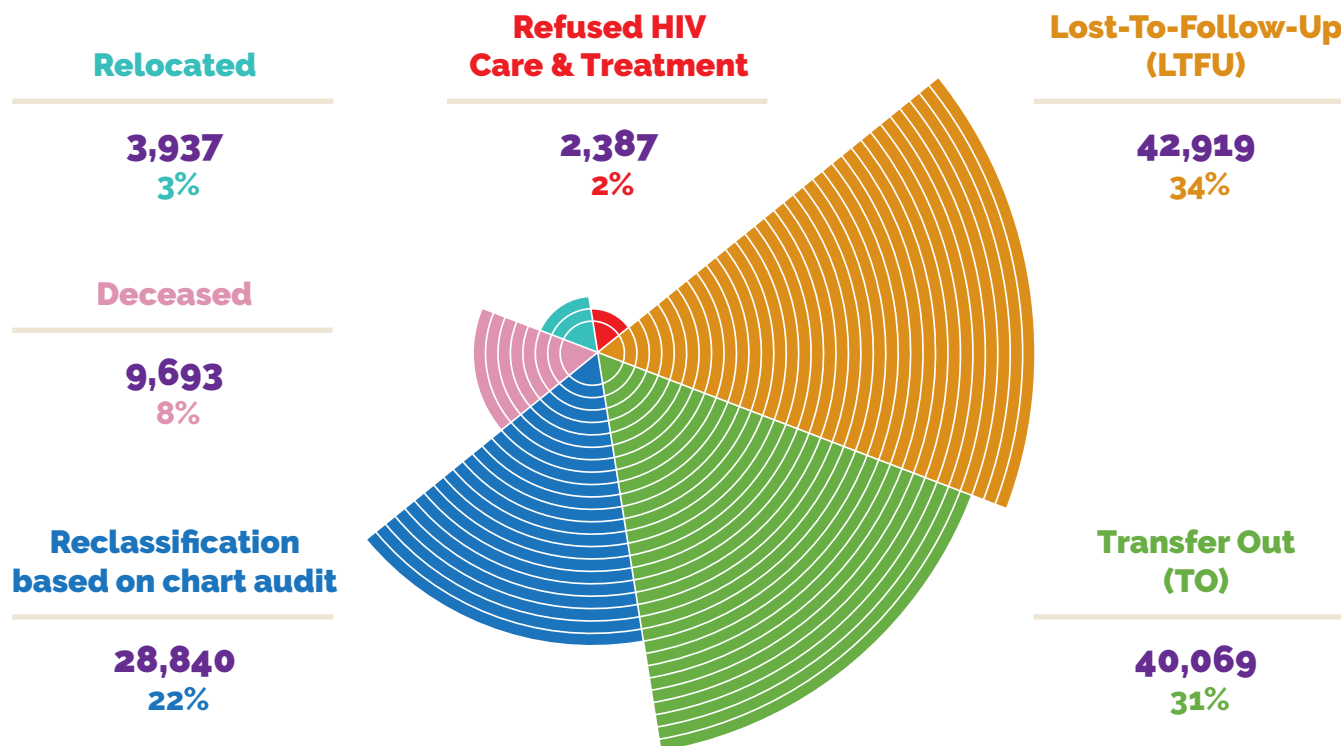
3.6%
in 2019

4.4%
in 2020

From 2019 to 2020, LTFU among the total number of clients in care decreased significantly for Africa Bureau but increased for India and Latin America & Caribbean Bureau

No-Longer-In-Care Clients (NLIC)

Reasons for becoming NLIC - Global Program (2020)



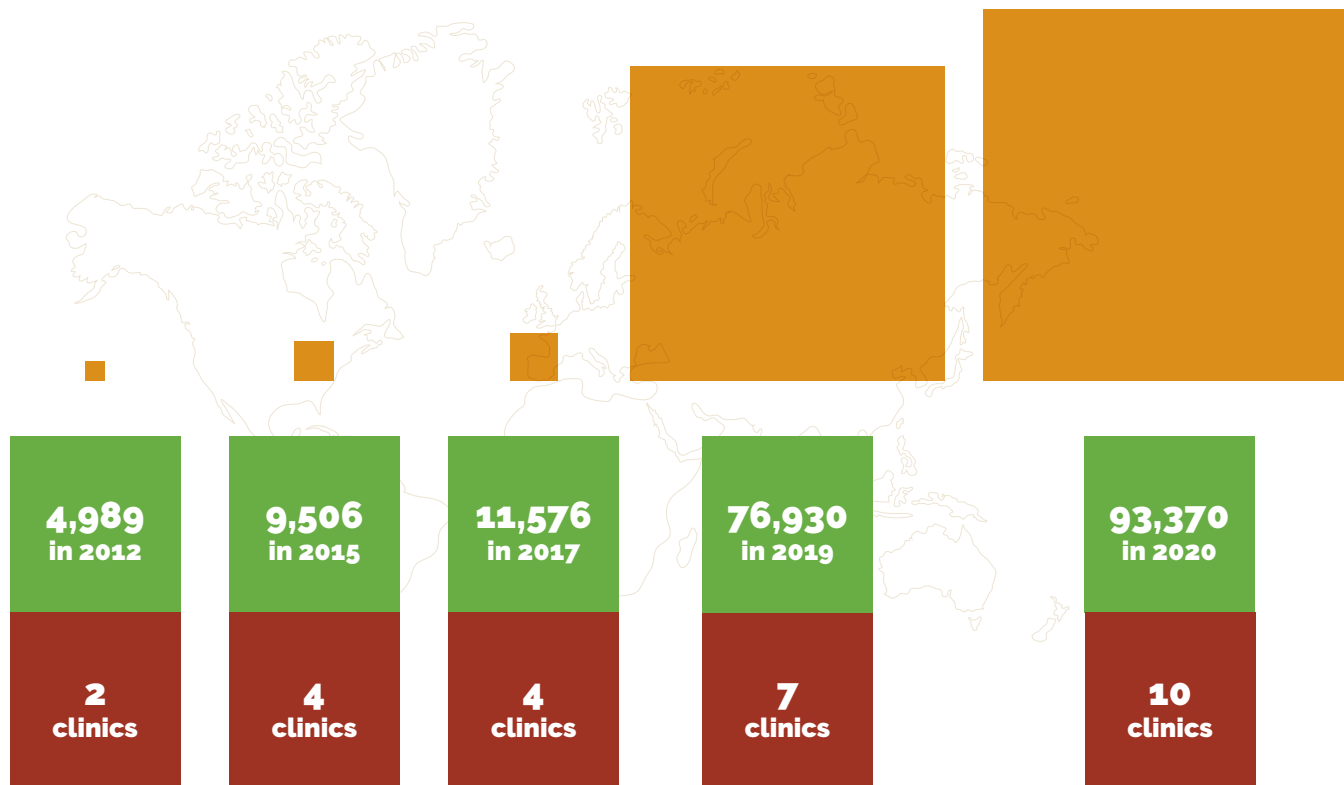
Most clients becoming NLIC are Transfer Out (31%) and LTFU (34%)

An additional 22% were clients who appeared to be NLIC following a medical record/chart audit

Many other LTFU may have ended up in treatment at another care & treatment facility or have died

Census Growth

Wellness clinics (2012-2020)



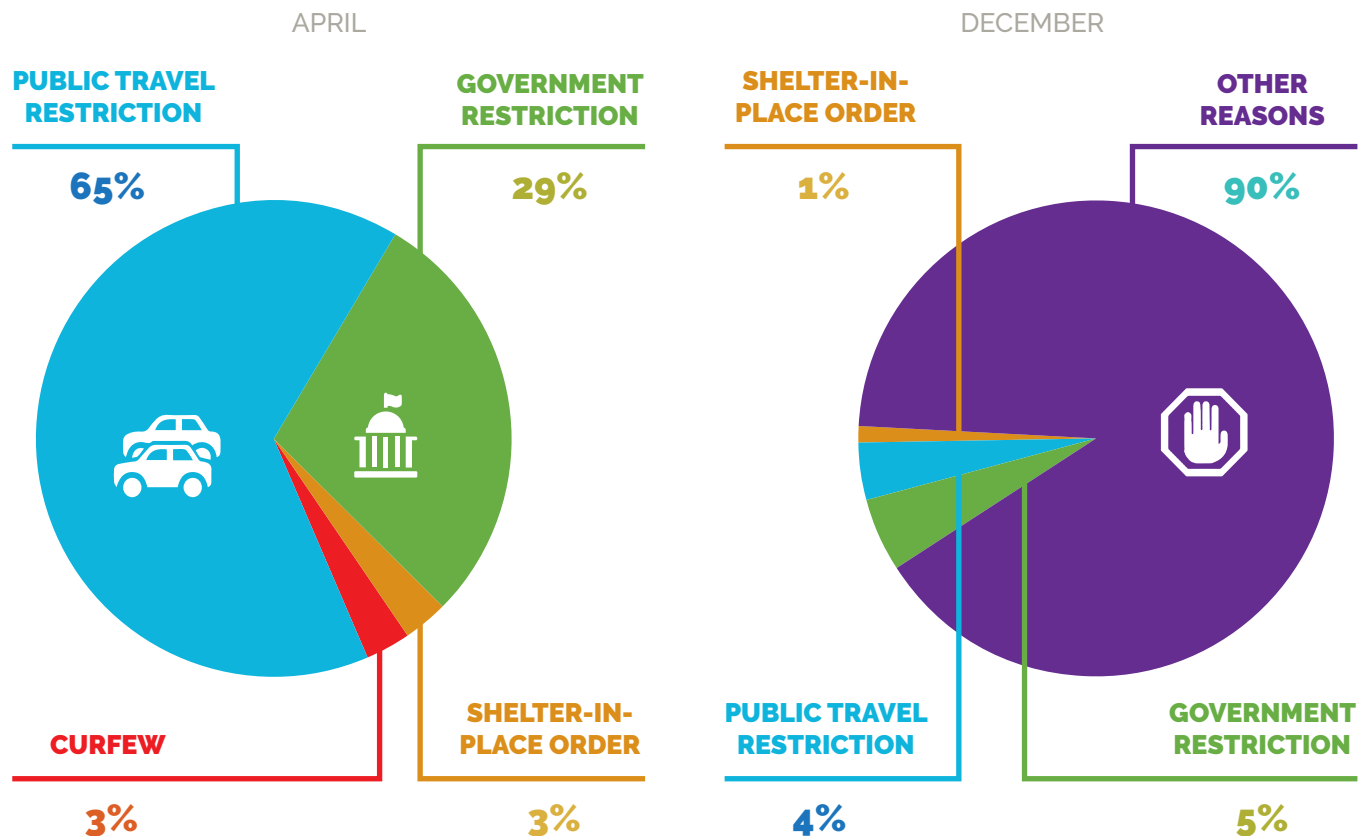
Wellness Clinics managed by AHF in the Latin America & Caribbean Bureau provide comprehensive preventive care, HIV Testing and STI management

The number of clinics increased over time, supporting a growing number of clients, reaching 93,370 in 2020

Structured reporting on WebPPR has facilitated streamlining of reports for wellness clinics where multiple indicators can now be tracked

COVID-19 Pandemic Facility Monitoring

Restrictions affecting facility operations (2020)



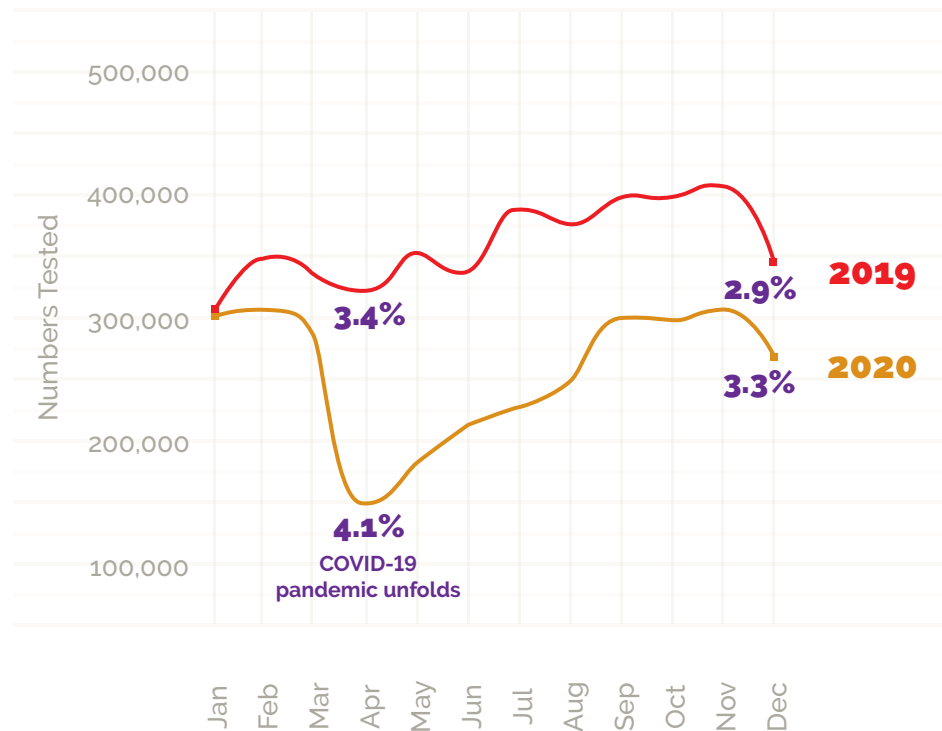
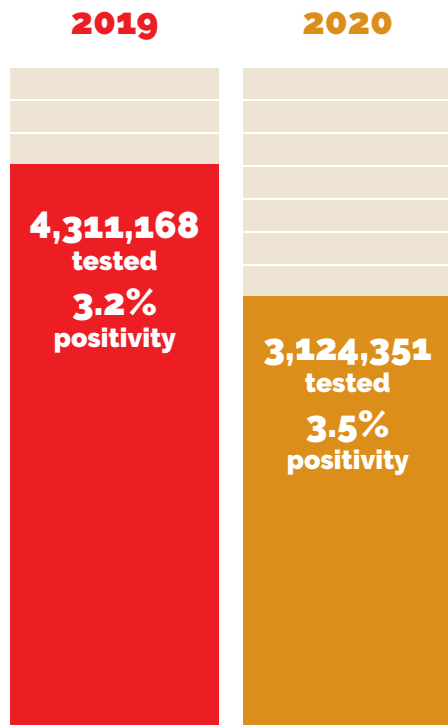
AHF established an online tool monitoring weekly the impact of country restrictions on service

The restrictions affected facilities that reported on partial or full shutdown: 62 in April, 66 in October and 79 in December

These include restricted HIV testing in the community and reduced hours of operation. 20 facilities are under full shutdown in India due to new government amendment 2020

HIV Testing

Comparison in testing (2019 versus 2020)



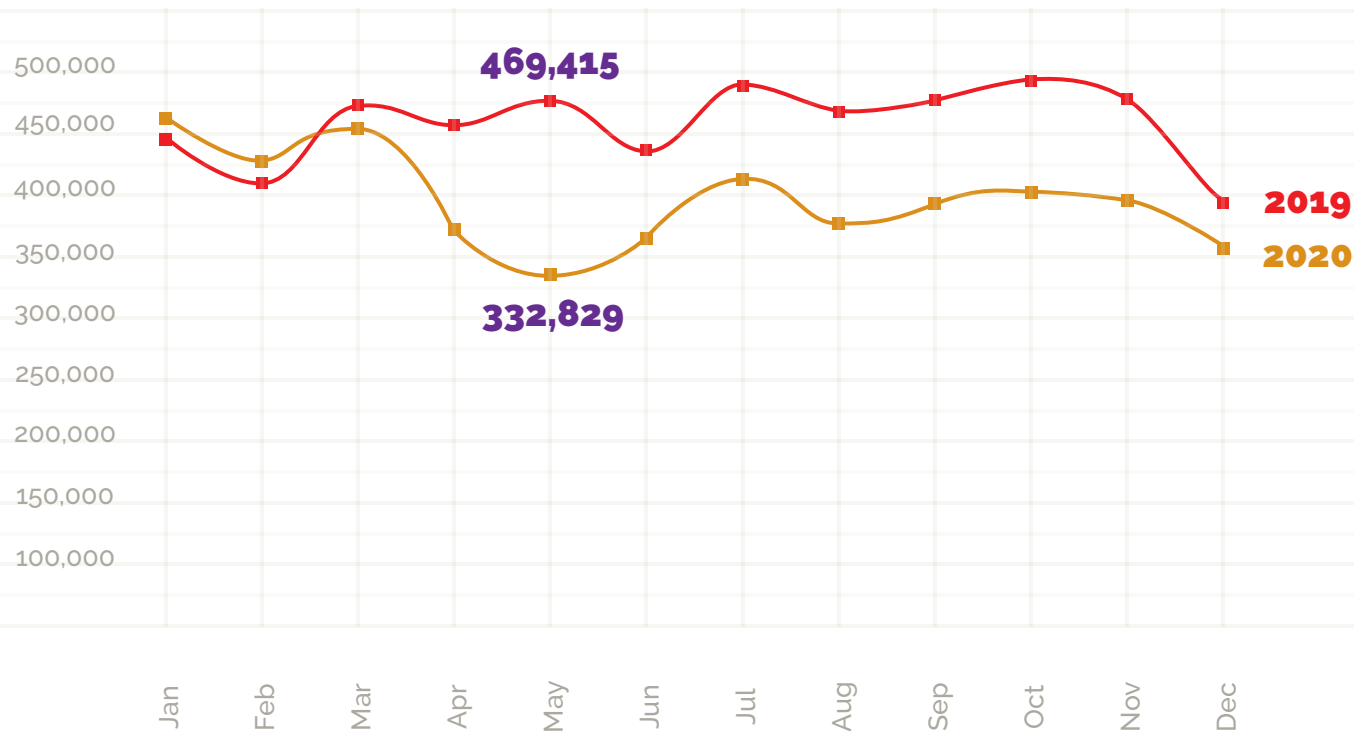
The drop in number of clients tested, from February to May in 2020 may be associated with COVID-19 country restrictions

Between May and November, there is a modest increase in the number tested, both in 2019 and 2020

This upward trend may be indicative of the re-opening of some facilities and other test programs

COVID-19 Pandemic Impact

Number of consultations for PLHIV (2019-2020)

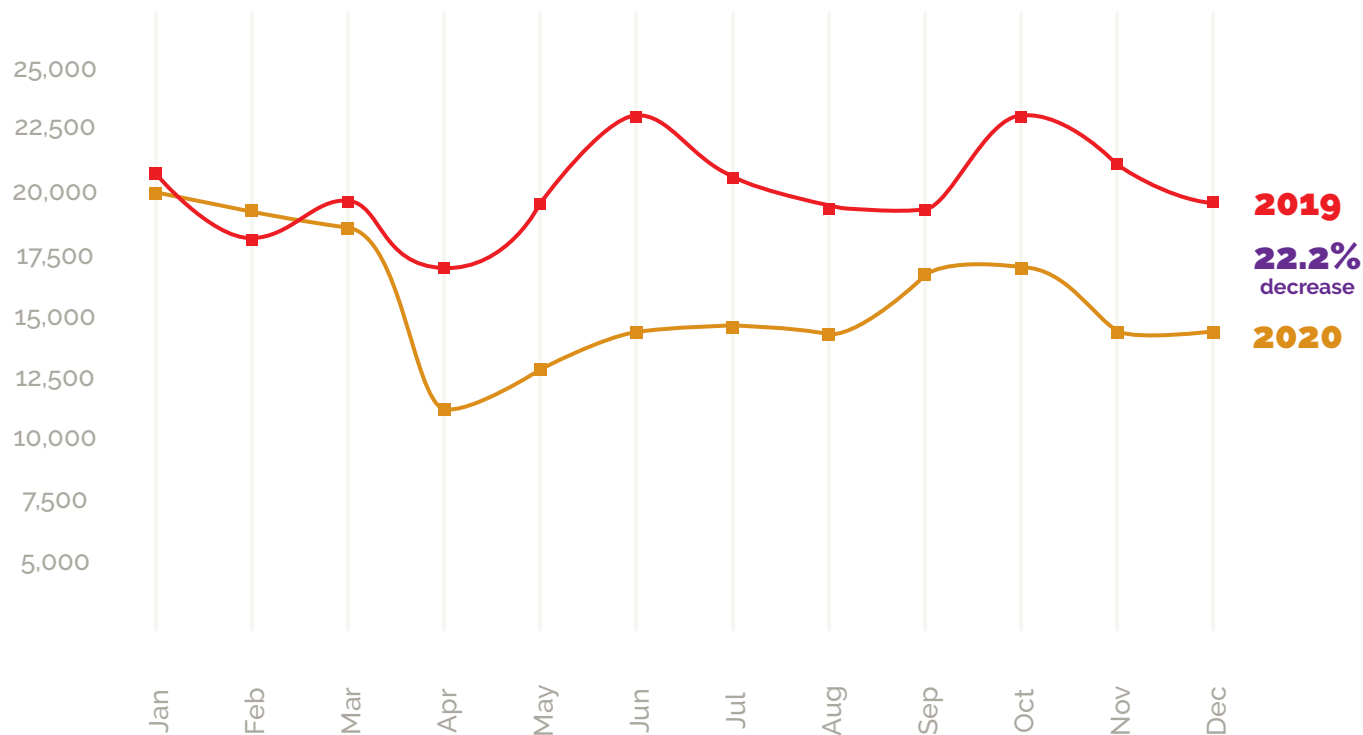


In the first two months of 2020 more clients were seen by a HIV care provider than in 2019

The total number of clients began to decline significantly in April 2020 compared to a stable trend observed after March in 2019

COVID-19 Pandemic Impact

New clients enrolled (2019 versus 2020)

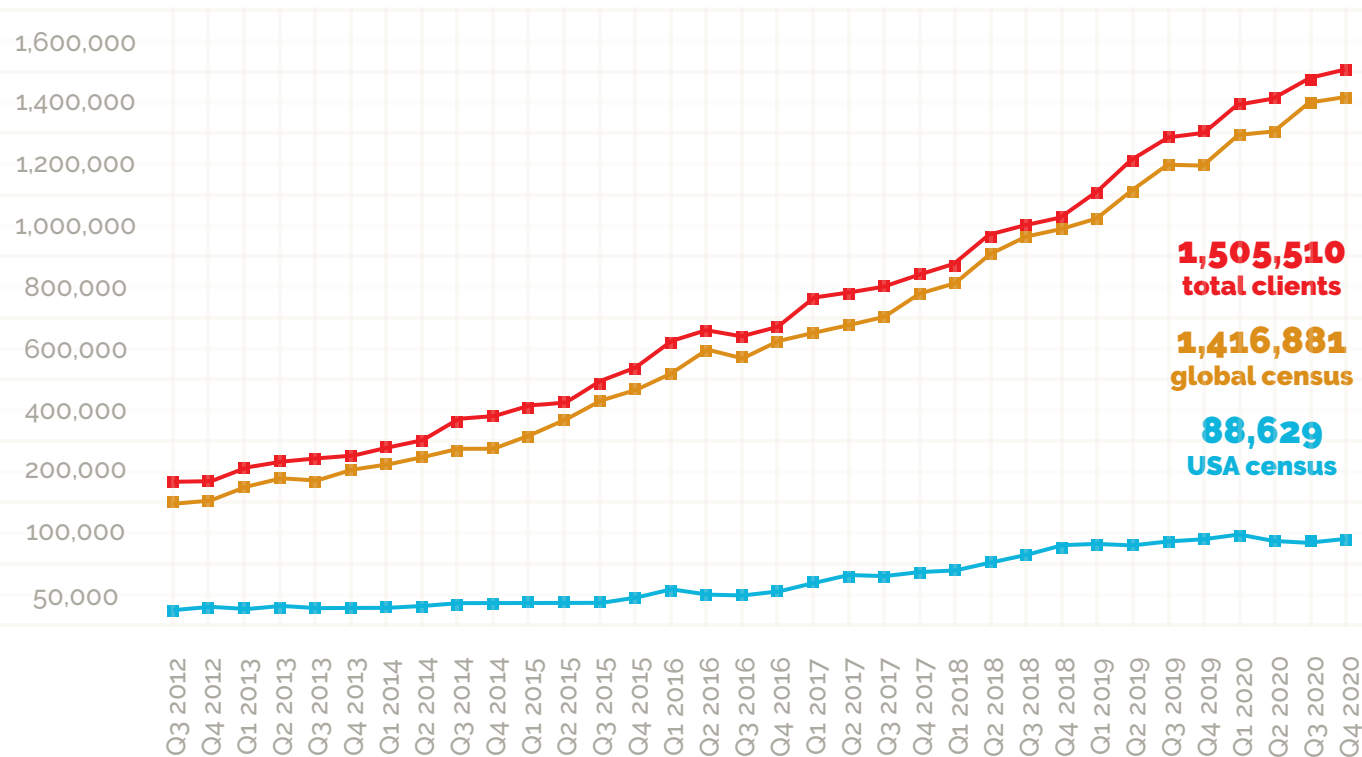


The first five months of 2020 saw a slower growth rate for census as compared to the same period in 2019

There is a significant decline in enrollments in March and April 2020, followed by a gradual increase in clients enrolled from May to October 2020

Census Growth 2020

Global and US programs combined (2012 - 2020)



"During these tough times we are living through, it is a thrill to report to you that AHF has reached 1,500,000 lives in care. This is a momentous achievement. This is your victory whether you work at a care site, an administrative position or if you serve on the board of directors. What makes this so gratifying is that we know that AHF's potential to march those last miles to ending AIDS as an epidemic are within our reach and capability."

Michael Weinstein

Global Medical, Quality and HMIS Teams Core Objective

To be assured, through data and evidence,
that every AHF patient is receiving
an excellent standard of care

For more information, email:
GlobalReports@aidshealth.org